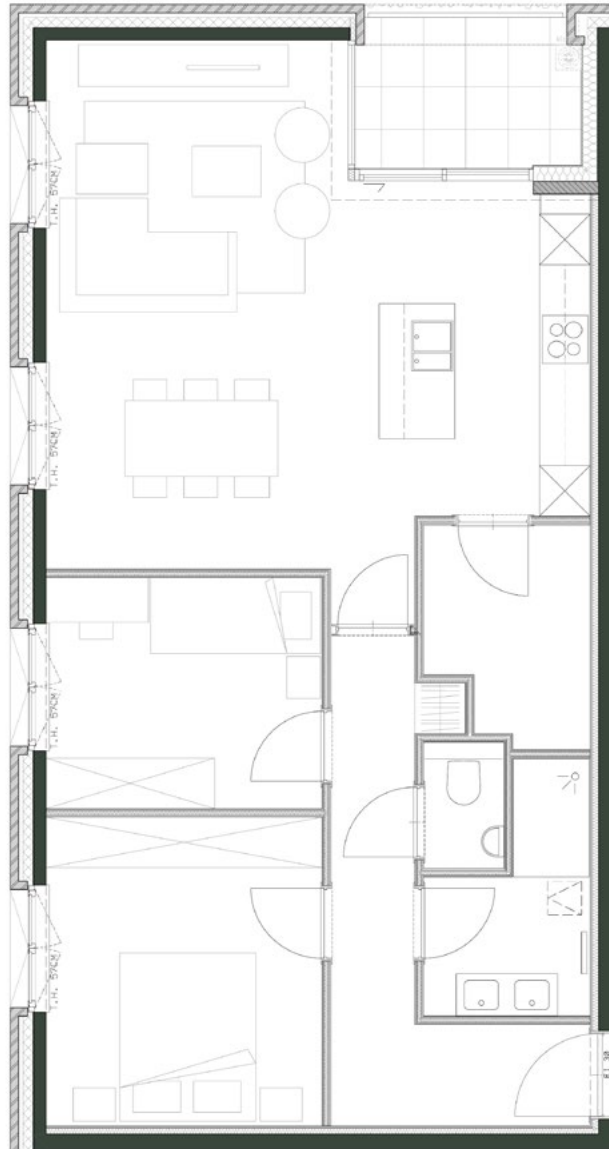


# Business flat 0.5



## GENERAL INFORMATION

Surface	78,2 m <sup>2</sup>
Bedrooms	2
Terrace	7,4 m <sup>2</sup>

## FINANCIAL

Rental price	€ 2.000
Rental charge	€ 350



NIGHTINGALE

[nightingale@quares.be](mailto:nightingale@quares.be)